

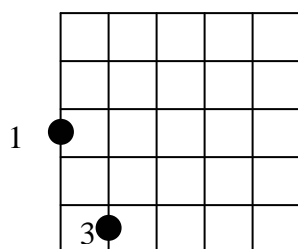
ROCK GUITAR - POWER CHORD WORKOUT

WWW.BLISSN2.CO.NZ

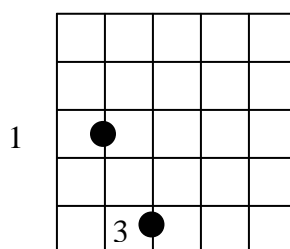
STEVE PAULL 2008

A BASIC POWER CHORD CAN BE PLAYED WITH ONLY 2 STRINGS. THEY ARE USUALLY PLAYED WITH EITHER THE 6TH AND 5TH STRINGS, OR THE 5TH AND 4TH STRINGS.

A) G POWER CHORD



B) C POWER CHORD



IN EXAMPLE A) ABOVE, THE G POWER CHORD TAKES ITS NAME FROM THE G NOTE PLAYED WITH THE FIRST FINGER ON THE 3RD FRET OF THE 6TH STRING.

IN EXAMPLE B), THE C POWER CHORD TAKES ITS NAME FROM THE C NOTE PLAYED ON THE 3RD FRET OF THE 5TH STRING.

CLEARLY TO BE ABLE TO PLAY EVERY POWER CHORD YOU NEED TO KNOW ALL THE NOTES ON THE 5TH AND 6TH STRINGS OF THE GUITAR.

ALL THE NATURAL NOTES (NOT SHARPENED OR FLATTENED) ARE SHOWN OVERLEAF GOING RIGHT UP TO THE 17TH FRET.

FRETBOARD DIAGRAM SHOWING NOTES ON THE 5TH AND 6TH STRINGS

Frets	1	2	3	4	5	6	7	8	9	10	11	12	13	14	15	16	17
5 th string		B	C		D		E	F		G		A		B	C		D
6 th string F			G		A		B	C		D		E	F		G		A

IF YOU HAVE A METRONOME SET IT FOR AROUND 80 BPM. NOW PLAY EVERY 6TH STRING POWER CHORD STARTING FROM THE 'F' RIGHT UP TO THE A ON THE 17TH FRET. PLAY EACH POWER CHORD FOR 4 BEATS EACH. THEN DO THE SAME FOR EVERY 5TH STRING POWER CHORD.